

THE BISHOP MUSEUM CAFÉ

PĀ 'AINA AWAKEA (ENTRÉES)

All plates except the Kalua Sliders come with Potato/Mac Salad.
Substitute a Pupukea Gardens Green Salad for \$1.95.

KALUA PIG PLATE \$11.95

with Sweet Potato, Haupia, Rice or Poi, and Lomi Salmon

BEEF STEW \$11.95

with Rice

PINEAPPLE SHOYU CHICKEN \$10.95

with Rice

KALUA SLIDERS \$11.95

with House-made Cole Slaw on King's Hawaiian® Sweet Bread
and a green salad (no upcharge)

LAU 'AI (SALADS)

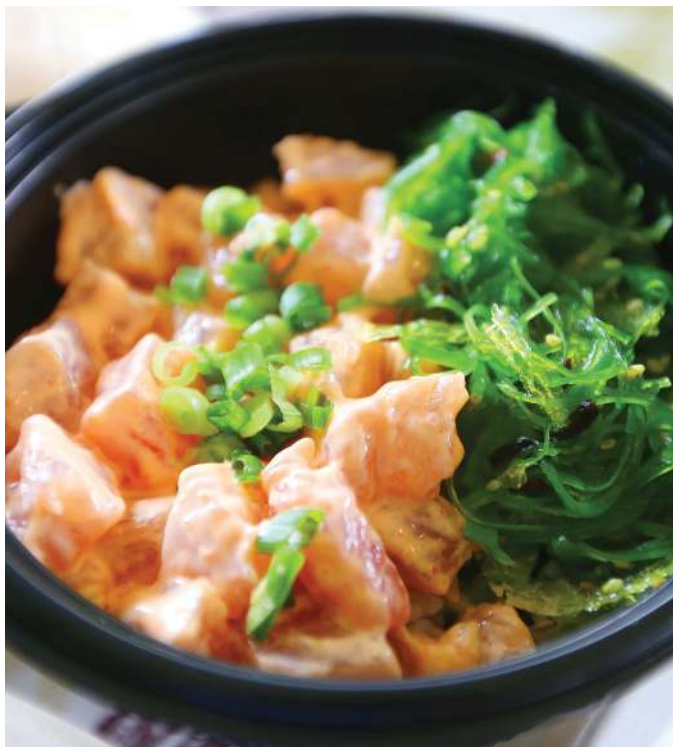
Add Ham or Turkey \$2.95

Add Tuna or Egg Salad \$3.75

CAESAR served with Croutons \$6.50

TOSSED PUPUKEA GARDEN GREENS \$7.95

Spring Greens, Romaine Lettuce, Red Cabbage, Cucumbers,
Tomatoes with Honey Walnuts and Croutons



POLA POKE (POKE BOWL)

FRESH SPICY OR SHOYU AHI POKE AND OCEAN SALAD* Mkt Price
with Furikake Rice

HELE MEA'AI (GRAB-N-GO)

SPAM MUSUBI \$1.95

FRIED NOODLES \$4.95

MEA 'ONO (HOUSE-MADE DESSERTS AND SNACKS)

GELATO (1/2/3 Scoops) \$2.50/4.00/5.25

HAUPIA \$1.50

CHOCOLATE HAUPIA ON SHORTBREAD CRUST \$4.25

SWEET POTATO-HAUPIA ON SHORTBREAD CRUST \$4.25

CHOCOLATE CHIP MACADAMIA NUT COOKIES \$4.65

OATMEAL COOKIES \$3.65

CHIPS \$1.25

*Consuming raw or undercooked meats, poultry, seafood, shellfish, or eggs INCLUDING POKE may increase your risk of foodborne illness, especially if you have certain medical conditions.

THE BISHOP MUSEUM CAFÉ

1525 BERNICE STREET • HONOLULU, HI 96817 • PHONE: (808) 954-4951 • WWW.MYHIGHWAYINN.COM

THE BISHOP MUSEUM CAFÉ

KANAUIKA (SANDWICHES)

Add Fountain Drink & Chips \$3.65

Add Fountain Drink & Pupukea Gardens Green Salad \$4.95

TUNA SALAD \$6.95

(White or Wheat) served with Lettuce and Tomato

PETERSON FARM EGG SALAD \$6.95

(White or Wheat) served with Lettuce

HAM & SWISS CHEESE CROISSANT SANDWICH \$7.95

served with Lettuce, Tomato and Honey Mustard Dressing

TURKEY & AMERICAN CHEESE CROISSANT SANDWICH \$7.95

served with Lettuce, Tomato and Dill Dressing

HAM & CHEESE PANINI \$8.95

served with Lettuce, Tomato and Honey Mustard Dressing on a Torta Bread Roll

TURKEY & CHEESE PANINI \$8.95

served with Lettuce, Tomato and Dill Dressing on a Torta Bread Roll

SPINACH WRAP \$10.95

Portabella Mushrooms, Zucchini, Green Leaf Lettuce, Eggplant, Red Bell Peppers, Jicama, Cucumbers, and Ranch Dill Dressing with House-made Coleslaw

KEIKI COMBO PACK

includes Bottled Water or Milk and a Snack

HOT DOG \$6.95

GRILLED CHEESE \$6.95

WAYFINDER'S MEA'AI \$6.95

includes Kalua Pig, 'Uala (Sweet Potato), and House-made Cookies



'AINA KAKAHIKA (BREAKFAST)

GREEK YOGURT WITH GRANOLA \$3.95

BLUEBERRY BAGEL W/CREAM CHEESE \$2.95

PLAIN BAGEL W/CREAM CHEESE \$2.95

TARO ENGLISH MUFFIN \$2.95

À LA CARTE

RICE \$1.75

KALUA PIG \$5.25

HOT DOG (LARGE) \$5.95

HOT DOG (REGULAR) \$4.95

POTATO-MACARONI SALAD \$2.95

MEA INU (DRINKS)

FOUNTAIN DRINKS (two free refills) \$3.25

COFFEE AND SPECIALTY COFFEES (S, M, L) \$2.25/2.95/3.95

KONA BLEND BREWED COFFEE (S, M, L) \$2.95/3.95/4.25

ESPRESSO (per shot) \$1.00

PLANTATION ICED TEA/POG/MILK \$2.95

WAI KOKO (17.5 oz can) \$3.25

BOTTLED WATER \$1.75

ORANGE JUICE \$3.50

BOTTLED MILK (STRAWBERRY, CHOCOLATE, OR VANILLA) \$2.25